

Return of Organization Exempt From Income Tax
Under section 501(c), 527, or 4947(a)(1) of the Internal Revenue Code (except private foundations)

OMB No. 1545-0047
2015
Open to Public Inspection

Do not enter social security numbers on this form as it may be made public.
Information about Form 990 and its instructions is at www.irs.gov/form990.

A For the 2015 calendar year, or tax year beginning , and ending

B Check if applicable:
 Address change
 Name change
 Initial return
 Final return/terminated
 Amended return
 Application pending

C Name of organization: **Cupertino Library Foundation**
 Doing business as: _____
 Number and street (or P.O. box if mail is not delivered to street address): **10800 Torre Avenue** Room/suite: _____
 City or town, state or province, country, and ZIP or foreign postal code: **Cupertino CA 95014**

D Employer identification number: **77-0372742**
E Telephone number: **408-255-2102**
G Gross receipts: **44,549**

F Name and address of principal officer:
Eno Schmidt
10800 Torre Avenue
Cupertino CA 95014

H(a) Is this a group return for subordinates? Yes No
H(b) Are all subordinates included? Yes No
 If "No," attach a list. (see instructions)

I Tax-exempt status: 501(c)(3) 501(c) () (insert no.) 4947(a)(1) or 527

J Website: **www.cupertinofoundation.org** **H(c)** Group exemption number: _____

K Form of organization: Corporation Trust Association Other

L Year of formation: **1994** **M** State of legal domicile: **CA**

Part I Summary

Activities & Governance	1 Briefly describe the organization's mission or most significant activities: The Organization's stated purpose is to raise money to help enhance life-long learning and self-improvement through the Cupertino Library.		
	2 Check this box <input type="checkbox"/> if the organization discontinued its operations or disposed of more than 25% of its net assets.		
	3 Number of voting members of the governing body (Part VI, line 1a)	3	8
	4 Number of independent voting members of the governing body (Part VI, line 1b)	4	8
	5 Total number of individuals employed in calendar year 2015 (Part V, line 2a)	5	0
	6 Total number of volunteers (estimate if necessary)	6	0
	7a Total unrelated business revenue from Part VIII, column (C), line 12	7a	0
b Net unrelated business taxable income from Form 990-T, line 34	7b	0	
Revenue	8 Contributions and grants (Part VIII, line 1h)	Prior Year	Current Year
	9 Program service revenue (Part VIII, line 2g)	44,988	27,785
	10 Investment income (Part VIII, column (A), lines 3, 4, and 7d)	-1,776	16,664
	11 Other revenue (Part VIII, column (A), lines 5, 6d, 8c, 9c, 10c, and 11e)	147	100
	12 Total revenue - add lines 8 through 11 (must equal Part VIII, column (A), line 12)	43,359	44,549
Expenses	13 Grants and similar amounts paid (Part IX, column (A), lines 1-3)		49,649
	14 Benefits paid to or for members (Part IX, column (A), line 4)		0
	15 Salaries, other compensation, employee benefits (Part IX, column (A), lines 5-10)		0
	16a Professional fundraising fees (Part IX, column (A), line 11e)		0
	b Total fundraising expenses (Part IX, column (D), line 25) ▶ 369		
	17 Other expenses (Part IX, column (A), lines 11a-11d, 11f-24e)	80,550	28,750
18 Total expenses. Add lines 13-17 (must equal Part IX, column (A), line 25)	80,550	78,399	
19 Revenue less expenses. Subtract line 18 from line 12	-37,191	-33,850	
Net Assets or Fund Balances	20 Total assets (Part X, line 16)	Beginning of Current Year	End of Year
	21 Total liabilities (Part X, line 26)	1,759,339	1,665,586
	22 Net assets or fund balances. Subtract line 21 from line 20	2,884	0
		1,756,455	1,665,586

Part II Signature Block

Under penalties of perjury, I declare that I have examined this return, including accompanying schedules and statements, and to the best of my knowledge and belief, it is true, correct, and complete. Declaration of preparer (other than officer) is based on all information of which preparer has any knowledge.

Sign Here
 Signature of officer: **Eno Schmidt** Date: _____
 Type or print name and title: **President**

Paid Preparer Use Only
 Print/Type preparer's name: **Deborah Daly** Preparer's signature: _____ Date: **04/27/16** Check if self-employed PTIN: **P00441755**
 Firm's name: **Deborah Daly CPA** Firm's EIN: _____
 Firm's address: **1592 Ramblewood Way Pleasanton, CA 94566** Phone no.: **925-426-1996**

May the IRS discuss this return with the preparer shown above? (see instructions) Yes No

Part III Statement of Program Service Accomplishments

Check if Schedule O contains a response or note to any line in this Part III

1 Briefly describe the organization's mission:
The Organization's stated purpose is to raise money to help enhance life-long learning and self-improvement through the Cupertino Library.

2 Did the organization undertake any significant program services during the year which were not listed on the prior Form 990 or 990-EZ? Yes No
If "Yes," describe these new services on Schedule O.

3 Did the organization cease conducting, or make significant changes in how it conducts, any program services? Yes No
If "Yes," describe these changes on Schedule O.

4 Describe the organization's program service accomplishments for each of its three largest program services, as measured by expenses. Section 501(c)(3) and 501(c)(4) organizations are required to report the amount of grants and allocations to others, the total expenses, and revenue, if any, for each program service reported.

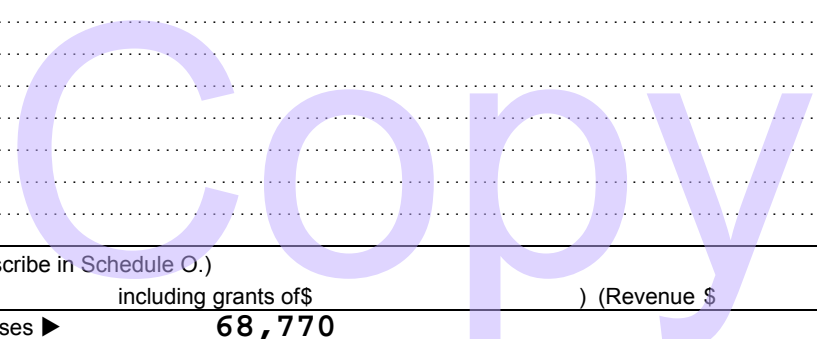
4a (Code:) (Expenses \$ **68,770** including grants of \$ **49,649**) (Revenue \$)
The Organization's primary objective is to raise money to enhance the Cupertino Library in providing the highest quality of operations. For the year ended December 31, 2014, the Organization implemented its mission in Cupertino by support for the Library through by providing \$29,965 of direct support, community events totaling \$15,142 and developing a website.

4b (Code:) (Expenses \$ including grants of \$) (Revenue \$)

4c (Code:) (Expenses \$ including grants of \$) (Revenue \$)

4d Other program services (Describe in Schedule O.)
(Expenses \$ including grants of \$) (Revenue \$)

4e Total program service expenses **68,770**



Part IV Checklist of Required Schedules

		Yes	No
1	Is the organization described in section 501(c)(3) or 4947(a)(1) (other than a private foundation)? If "Yes," complete Schedule A	X	
2	Is the organization required to complete Schedule B, Schedule of Contributors (see instructions)?	X	
3	Did the organization engage in direct or indirect political campaign activities on behalf of or in opposition to candidates for public office? If "Yes," complete Schedule C, Part I		X
4	Section 501(c)(3) organizations. Did the organization engage in lobbying activities, or have a section 501(h) election in effect during the tax year? If "Yes," complete Schedule C, Part II		X
5	Is the organization a section 501(c)(4), 501(c)(5), or 501(c)(6) organization that receives membership dues, assessments, or similar amounts as defined in Revenue Procedure 98-19? If "Yes," complete Schedule C, Part III		X
6	Did the organization maintain any donor advised funds or any similar funds or accounts for which donors have the right to provide advice on the distribution or investment of amounts in such funds or accounts? If "Yes," complete Schedule D, Part I		X
7	Did the organization receive or hold a conservation easement, including easements to preserve open space, the environment, historic land areas, or historic structures? If "Yes," complete Schedule D, Part II		X
8	Did the organization maintain collections of works of art, historical treasures, or other similar assets? If "Yes," complete Schedule D, Part III		X
9	Did the organization report an amount in Part X, line 21, for escrow or custodial account liability, serve as a custodian for amounts not listed in Part X; or provide credit counseling, debt management, credit repair, or debt negotiation services? If "Yes," complete Schedule D, Part IV		X
10	Did the organization, directly or through a related organization, hold assets in temporarily restricted endowments, permanent endowments, or quasi-endowments? If "Yes," complete Schedule D, Part V	X	
11	If the organization's answer to any of the following questions is "Yes," then complete Schedule D, Parts VI, VII, VIII, IX, or X as applicable.		
a	Did the organization report an amount for land, buildings, and equipment in Part X, line 10? If "Yes," complete Schedule D, Part VI		X
b	Did the organization report an amount for investments—other securities in Part X, line 12 that is 5% or more of its total assets reported in Part X, line 16? If "Yes," complete Schedule D, Part VII		X
c	Did the organization report an amount for investments—program related in Part X, line 13 that is 5% or more of its total assets reported in Part X, line 16? If "Yes," complete Schedule D, Part VIII		X
d	Did the organization report an amount for other assets in Part X, line 15 that is 5% or more of its total assets reported in Part X, line 16? If "Yes," complete Schedule D, Part IX		X
e	Did the organization report an amount for other liabilities in Part X, line 25? If "Yes," complete Schedule D, Part X		X
f	Did the organization's separate or consolidated financial statements for the tax year include a footnote that addresses the organization's liability for uncertain tax positions under FIN 48 (ASC 740)? If "Yes," complete Schedule D, Part X	X	
12a	Did the organization obtain separate, independent audited financial statements for the tax year? If "Yes," complete Schedule D, Parts XI and XII	X	
b	Was the organization included in consolidated, independent audited financial statements for the tax year? If "Yes," and if the organization answered "No" to line 12a, then completing Schedule D, Parts XI and XII is optional		X
13	Is the organization a school described in section 170(b)(1)(A)(ii)? If "Yes," complete Schedule E		X
14a	Did the organization maintain an office, employees, or agents outside of the United States?		X
b	Did the organization have aggregate revenues or expenses of more than \$10,000 from grantmaking, fundraising, business, investment, and program service activities outside the United States, or aggregate foreign investments valued at \$100,000 or more? If "Yes," complete Schedule F, Parts I and IV		X
15	Did the organization report on Part IX, column (A), line 3, more than \$5,000 of grants or other assistance to or for any foreign organization? If "Yes," complete Schedule F, Parts II and IV		X
16	Did the organization report on Part IX, column (A), line 3, more than \$5,000 of aggregate grants or other assistance to or for foreign individuals? If "Yes," complete Schedule F, Parts III and IV		X
17	Did the organization report a total of more than \$15,000 of expenses for professional fundraising services on Part IX, column (A), lines 6 and 11e? If "Yes," complete Schedule G, Part I (see instructions)		X
18	Did the organization report more than \$15,000 total of fundraising event gross income and contributions on Part VIII, lines 1c and 8a? If "Yes," complete Schedule G, Part II		X
19	Did the organization report more than \$15,000 of gross income from gaming activities on Part VIII, line 9a? If "Yes," complete Schedule G, Part III		X

Part IV Checklist of Required Schedules (continued)

		Yes	No
20a	Did the organization operate one or more hospital facilities? If "Yes," complete Schedule H		X
b	If "Yes" to line 20a, did the organization attach a copy of its audited financial statements to this return?		
21	Did the organization report more than \$5,000 of grants or other assistance to any domestic organization or domestic government on Part IX, column (A), line 1? If "Yes," complete Schedule I, Parts I and II	X	
22	Did the organization report more than \$5,000 of grants or other assistance to or for domestic individuals on Part IX, column (A), line 2? If "Yes," complete Schedule I, Parts I and III		X
23	Did the organization answer "Yes" to Part VII, Section A, line 3, 4, or 5 about compensation of the organization's current and former officers, directors, trustees, key employees, and highest compensated employees? If "Yes," complete Schedule J		X
24a	Did the organization have a tax-exempt bond issue with an outstanding principal amount of more than \$100,000 as of the last day of the year, that was issued after December 31, 2002? If "Yes," answer lines 24b through 24d and complete Schedule K. If "No," go to line 25a		X
b	Did the organization invest any proceeds of tax-exempt bonds beyond a temporary period exception?		
c	Did the organization maintain an escrow account other than a refunding escrow at any time during the year to defease any tax-exempt bonds?		
d	Did the organization act as an "on behalf of" issuer for bonds outstanding at any time during the year?		
25a	Section 501(c)(3), 501(c)(4), and 501(c)(29) organizations. Did the organization engage in an excess benefit transaction with a disqualified person during the year? If "Yes," complete Schedule L, Part I		X
b	Is the organization aware that it engaged in an excess benefit transaction with a disqualified person in a prior year, and that the transaction has not been reported on any of the organization's prior Forms 990 or 990-EZ? If "Yes," complete Schedule L, Part I		X
26	Did the organization report any amount on Part X, line 5, 6, or 22 for receivables from or payables to any current or former officers, directors, trustees, key employees, highest compensated employees, or disqualified persons? If "Yes," complete Schedule L, Part II		X
27	Did the organization provide a grant or other assistance to an officer, director, trustee, key employee, substantial contributor or employee thereof, a grant selection committee member, or to a 35% controlled entity or family member of any of these persons? If "Yes," complete Schedule L, Part III		X
28	Was the organization a party to a business transaction with one of the following parties (see Schedule L, Part IV instructions for applicable filing thresholds, conditions, and exceptions):		
a	A current or former officer, director, trustee, or key employee? If "Yes," complete Schedule L, Part IV		X
b	A family member of a current or former officer, director, trustee, or key employee? If "Yes," complete Schedule L, Part IV		X
c	An entity of which a current or former officer, director, trustee, or key employee (or a family member thereof) was an officer, director, trustee, or direct or indirect owner? If "Yes," complete Schedule L, Part IV		X
29	Did the organization receive more than \$25,000 in non-cash contributions? If "Yes," complete Schedule M		X
30	Did the organization receive contributions of art, historical treasures, or other similar assets, or qualified conservation contributions? If "Yes," complete Schedule M		X
31	Did the organization liquidate, terminate, or dissolve and cease operations? If "Yes," complete Schedule N, Part I		X
32	Did the organization sell, exchange, dispose of, or transfer more than 25% of its net assets? If "Yes," complete Schedule N, Part II		X
33	Did the organization own 100% of an entity disregarded as separate from the organization under Regulations sections 301.7701-2 and 301.7701-3? If "Yes," complete Schedule R, Part I		X
34	Was the organization related to any tax-exempt or taxable entity? If "Yes," complete Schedule R, Parts II, III, or IV, and Part V, line 1		X
35a	Did the organization have a controlled entity within the meaning of section 512(b)(13)?		X
b	If "Yes" to line 35a, did the organization receive any payment from or engage in any transaction with a controlled entity within the meaning of section 512(b)(13)? If "Yes," complete Schedule R, Part V, line 2		
36	Section 501(c)(3) organizations. Did the organization make any transfers to an exempt non-charitable related organization? If "Yes," complete Schedule R, Part V, line 2		X
37	Did the organization conduct more than 5% of its activities through an entity that is not a related organization and that is treated as a partnership for federal income tax purposes? If "Yes," complete Schedule R, Part VI		X
38	Did the organization complete Schedule O and provide explanations in Schedule O for Part VI, lines 11b and 19? Note. All Form 990 filers are required to complete Schedule O.	X	

Part V Statements Regarding Other IRS Filings and Tax Compliance

Check if Schedule O contains a response or note to any line in this Part V

		Yes	No		
1a	Enter the number reported in Box 3 of Form 1096. Enter -0- if not applicable	1a	3		
1b	Enter the number of Forms W-2G included in line 1a. Enter -0- if not applicable	1b	0		
c	Did the organization comply with backup withholding rules for reportable payments to vendors and reportable gaming (gambling) winnings to prize winners?	1c			
2a	Enter the number of employees reported on Form W-3, Transmittal of Wage and Tax Statements, filed for the calendar year ending with or within the year covered by this return	2a	0		
b	If at least one is reported on line 2a, did the organization file all required federal employment tax returns? Note. If the sum of lines 1a and 2a is greater than 250, you may be required to e-file (see instructions)	2b			
3a	Did the organization have unrelated business gross income of \$1,000 or more during the year?	3a			X
b	If "Yes," has it filed a Form 990-T for this year? If "No" to line 3b, provide an explanation in Schedule O	3b			
4a	At any time during the calendar year, did the organization have an interest in, or a signature or other authority over, a financial account in a foreign country (such as a bank account, securities account, or other financial account)?	4a			X
b	If "Yes," enter the name of the foreign country: ▶ See instructions for filing requirements for FinCEN Form 114, Report of Foreign Bank and Financial Accounts (FBAR).				
5a	Was the organization a party to a prohibited tax shelter transaction at any time during the tax year?	5a			X
b	Did any taxable party notify the organization that it was or is a party to a prohibited tax shelter transaction?	5b			X
c	If "Yes" to line 5a or 5b, did the organization file Form 8886-T?	5c			
6a	Does the organization have annual gross receipts that are normally greater than \$100,000, and did the organization solicit any contributions that were not tax deductible as charitable contributions?	6a			X
b	If "Yes," did the organization include with every solicitation an express statement that such contributions or gifts were not tax deductible?	6b			
7	Organizations that may receive deductible contributions under section 170(c).				
a	Did the organization receive a payment in excess of \$75 made partly as a contribution and partly for goods and services provided to the payor?	7a			X
b	If "Yes," did the organization notify the donor of the value of the goods or services provided?	7b			
c	Did the organization sell, exchange, or otherwise dispose of tangible personal property for which it was required to file Form 8282?	7c			X
d	If "Yes," indicate the number of Forms 8282 filed during the year	7d			
e	Did the organization receive any funds, directly or indirectly, to pay premiums on a personal benefit contract?	7e			X
f	Did the organization, during the year, pay premiums, directly or indirectly, on a personal benefit contract?	7f			X
g	If the organization received a contribution of qualified intellectual property, did the organization file Form 8899 as required?	7g			
h	If the organization received a contribution of cars, boats, airplanes, or other vehicles, did the organization file a Form 1098-C?	7h			
8	Sponsoring organizations maintaining donor advised funds. Did a donor advised fund maintained by the sponsoring organization have excess business holdings at any time during the year?	8			
9	Sponsoring organizations maintaining donor advised funds.				
a	Did the sponsoring organization make any taxable distributions under section 4966?	9a			
b	Did the sponsoring organization make a distribution to a donor, donor advisor, or related person?	9b			
10	Section 501(c)(7) organizations. Enter:				
a	Initiation fees and capital contributions included on Part VIII, line 12	10a			
b	Gross receipts, included on Form 990, Part VIII, line 12, for public use of club facilities	10b			
11	Section 501(c)(12) organizations. Enter:				
a	Gross income from members or shareholders	11a			
b	Gross income from other sources (Do not net amounts due or paid to other sources against amounts due or received from them.)	11b			
12a	Section 4947(a)(1) non-exempt charitable trusts. Is the organization filing Form 990 in lieu of Form 1041?	12a			
b	If "Yes," enter the amount of tax-exempt interest received or accrued during the year	12b			
13	Section 501(c)(29) qualified nonprofit health insurance issuers.				
a	Is the organization licensed to issue qualified health plans in more than one state? Note. See the instructions for additional information the organization must report on Schedule O.	13a			
b	Enter the amount of reserves the organization is required to maintain by the states in which the organization is licensed to issue qualified health plans	13b			
c	Enter the amount of reserves on hand	13c			
14a	Did the organization receive any payments for indoor tanning services during the tax year?	14a			X
b	If "Yes," has it filed a Form 720 to report these payments? If "No," provide an explanation in Schedule O	14b			

Part VI Governance, Management, and Disclosure For each "Yes" response to lines 2 through 7b below, and for a "No" response to line 8a, 8b, or 10b below, describe the circumstances, processes, or changes in Schedule O. See instructions. Check if Schedule O contains a response or note to any line in this Part VI

Section A. Governing Body and Management

		Yes	No
1a	Enter the number of voting members of the governing body at the end of the tax year If there are material differences in voting rights among members of the governing body, or if the governing body delegated broad authority to an executive committee or similar committee, explain in Schedule O.		
1b	Enter the number of voting members included in line 1a, above, who are independent		
2	Did any officer, director, trustee, or key employee have a family relationship or a business relationship with any other officer, director, trustee, or key employee?		X
3	Did the organization delegate control over management duties customarily performed by or under the direct supervision of officers, directors, or trustees, or key employees to a management company or other person?		X
4	Did the organization make any significant changes to its governing documents since the prior Form 990 was filed?		X
5	Did the organization become aware during the year of a significant diversion of the organization's assets?		X
6	Did the organization have members or stockholders?		X
7a	Did the organization have members, stockholders, or other persons who had the power to elect or appoint one or more members of the governing body?		X
7b	Are any governance decisions of the organization reserved to (or subject to approval by) members, stockholders, or persons other than the governing body?		X
8	Did the organization contemporaneously document the meetings held or written actions undertaken during the year by the following:		
8a	The governing body?	X	
8b	Each committee with authority to act on behalf of the governing body?	X	
9	Is there any officer, director, trustee, or key employee listed in Part VII, Section A, who cannot be reached at the organization's mailing address? If "Yes," provide the names and addresses in Schedule O		X

Section B. Policies (This Section B requests information about policies not required by the Internal Revenue Code.)

		Yes	No
10a	Did the organization have local chapters, branches, or affiliates?		X
10b	If "Yes," did the organization have written policies and procedures governing the activities of such chapters, affiliates, and branches to ensure their operations are consistent with the organization's exempt purposes?		
11a	Has the organization provided a complete copy of this Form 990 to all members of its governing body before filing the form?	X	
11b	Describe in Schedule O the process, if any, used by the organization to review this Form 990.		
12a	Did the organization have a written conflict of interest policy? If "No," go to line 13	X	
12b	Were officers, directors, or trustees, and key employees required to disclose annually interests that could give rise to conflicts?	X	
12c	Did the organization regularly and consistently monitor and enforce compliance with the policy? If "Yes," describe in Schedule O how this was done	X	
13	Did the organization have a written whistleblower policy?		X
14	Did the organization have a written document retention and destruction policy?		X
15	Did the process for determining compensation of the following persons include a review and approval by independent persons, comparability data, and contemporaneous substantiation of the deliberation and decision?		
15a	The organization's CEO, Executive Director, or top management official		X
15b	Other officers or key employees of the organization		X
	If "Yes" to line 15a or 15b, describe the process in Schedule O (see instructions).		
16a	Did the organization invest in, contribute assets to, or participate in a joint venture or similar arrangement with a taxable entity during the year?		X
16b	If "Yes," did the organization follow a written policy or procedure requiring the organization to evaluate its participation in joint venture arrangements under applicable federal tax law, and take steps to safeguard the organization's exempt status with respect to such arrangements?		

Section C. Disclosure

- 17** List the states with which a copy of this Form 990 is required to be filed **▶ CA**
- 18** Section 6104 requires an organization to make its Forms 1023 (or 1024 if applicable), 990, and 990-T (Section 501(c)(3)s only) available for public inspection. Indicate how you made these available. Check all that apply.
 Own website Another's website Upon request Other (explain in Schedule O)
- 19** Describe in Schedule O whether (and if so, how) the organization made its governing documents, conflict of interest policy, and financial statements available to the public during the tax year.
- 20** State the name, address, and telephone number of the person who possesses the organization's books and records: **▶**

Lillian Schmidt
Cupertino
10800 Torre Avenue

CA 95014 **408-255-2102**

Part VII Compensation of Officers, Directors, Trustees, Key Employees, Highest Compensated Employees, and Independent Contractors

Check if Schedule O contains a response or note to any line in this Part VII

Section A. Officers, Directors, Trustees, Key Employees, and Highest Compensated Employees

1a Complete this table for all persons required to be listed. Report compensation for the calendar year ending with or within the organization's tax year.

- List all of the organization's **current** officers, directors, trustees (whether individuals or organizations), regardless of amount of compensation. Enter -0- in columns (D), (E), and (F) if no compensation was paid.
- List all of the organization's **current** key employees, if any. See instructions for definition of "key employee."
- List the organization's five **current** highest compensated employees (other than an officer, director, trustee, or key employee) who received reportable compensation (Box 5 of Form W-2 and/or Box 7 of Form 1099-MISC) of more than \$100,000 from the organization and any related organizations.
- List all of the organization's **former** officers, key employees, and highest compensated employees who received more than \$100,000 of reportable compensation from the organization and any related organizations.
- List all of the organization's **former directors or trustees** that received, in the capacity as a former director or trustee of the organization, more than \$10,000 of reportable compensation from the organization and any related organizations.

List persons in the following order: individual trustees or directors; institutional trustees; officers; key employees; highest compensated employees; and former such persons.

Check this box if neither the organization nor any related organization compensated any current officer, director, or trustee.

(A) Name and Title	(B) Average hours per week (list any hours for related organizations below dotted line)	(C) Position (do not check more than one box, unless person is both an officer and a director/trustee)						(D) Reportable compensation from the organization (W-2/1099-MISC)	(E) Reportable compensation from related organizations (W-2/1099-MISC)	(F) Estimated amount of other compensation from the organization and related organizations
		Individual trustee or director	Institutional trustee	Officer	Key employee	Highest compensated employee	Former			
(1) Eno Schmidt President	12.00 0.00	X		X				0	0	0
(2) Annie Ho At Large	1.00 0.00	X						0	0	0
(3) Chi Yeh Treasurer	2.00 0.00	X		X				0	0	0
(4) Beverly Lenihan Vice President	2.00 0.00	X		X				0	0	0
(5) Kiran Kundargi At Large	1.00 0.00	X						0	0	0
(6) Jerry Liu At Large	4.00 0.00	X						0	0	0
(7) Art Cohen At Large	1.00 0.00	X						0	0	0
(8) Calina Thompson Secretary	2.00 0.00	X		X				0	0	0
(9)										
(10)										
(11)										

Part VIII Statement of Revenue

Check if Schedule O contains a response or note to any line in this Part VIII

		(A) Total revenue	(B) Related or exempt function revenue	(C) Unrelated business revenue	(D) Revenue excluded from tax under sections 512-514	
Contributions, Gifts, Grants and Other Similar Amounts	1a Federated campaigns					
	1b Membership dues					
	1c Fundraising events					
	1d Related organizations					
	1e Government grants (contributions)					
	1f All other contributions, gifts, grants, and similar amounts not included above	27,785				
	g Noncash contributions included in lines 1a-1f: \$					
	h Total. Add lines 1a-1f		27,785			
Program Service Revenue	2a					
	b					
	c					
	d					
	e					
	f All other program service revenue					
	g Total. Add lines 2a-2f					
Other Revenue	3 Investment income (including dividends, interest, and other similar amounts)		16,664		16,664	
	4 Income from investment of tax-exempt bond proceeds					
	5 Royalties					
	6a Gross rents	(i) Real				
		(ii) Personal				
	b Less: rental exps.					
	c Rental inc. or (loss)					
	d Net rental income or (loss)					
	7a Gross amount from sales of assets other than inventory	(i) Securities				
		(ii) Other				
	b Less: cost or other basis & sales exps.					
	c Gain or (loss)					
	d Net gain or (loss)					
	8a Gross income from fundraising events (not including \$ of contributions reported on line 1c). See Part IV, line 18	a				
	b Less: direct expenses	b				
c Net income or (loss) from fundraising events						
9a Gross income from gaming activities. See Part IV, line 19	a					
b Less: direct expenses	b					
c Net income or (loss) from gaming activities						
10a Gross sales of inventory, less returns and allowances	a					
b Less: cost of goods sold	b					
c Net income or (loss) from sales of inventory						
Miscellaneous Revenue						
11a Reimbursements	Busn. Code					
			100	100		
	b					
	c					
	d All other revenue					
e Total. Add lines 11a-11d			100			
12 Total revenue. See instructions.		44,549	100	0	16,664	

Part IX Statement of Functional Expenses

Section 501(c)(3) and 501(c)(4) organizations must complete all columns. All other organizations must complete column (A).

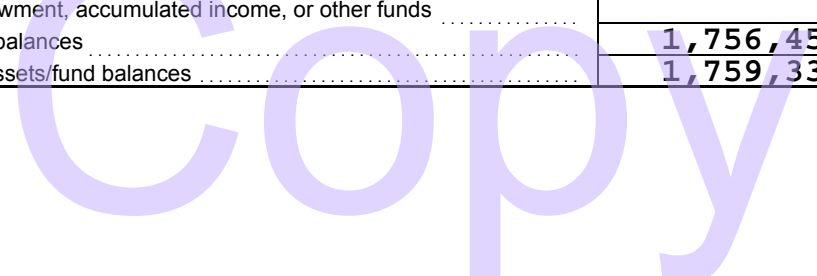
Check if Schedule O contains a response or note to any line in this Part IX

Do not include amounts reported on lines 6b, 7b, 8b, 9b, and 10b of Part VIII.	(A) Total expenses	(B) Program service expenses	(C) Management and general expenses	(D) Fundraising expenses
1 Grants and other assistance to domestic organizations and domestic governments. See Part IV, line 21	49,649	49,649		
2 Grants and other assistance to domestic individuals. See Part IV, line 22				
3 Grants and other assistance to foreign organizations, foreign governments, and foreign individuals. See Part IV, lines 15 and 16				
4 Benefits paid to or for members				
5 Compensation of current officers, directors, trustees, and key employees				
6 Compensation not included above, to disqualified persons (as defined under section 4958(f)(1)) and persons described in section 4958(c)(3)(B)				
7 Other salaries and wages				
8 Pension plan accruals and contributions (include section 401(k) and 403(b) employer contributions)				
9 Other employee benefits				
10 Payroll taxes				
11 Fees for services (non-employees):				
a Management				
b Legal				
c Accounting	5,350		5,350	
d Lobbying				
e Professional fundraising services. See Part IV, line 7				
f Investment management fees				
g Other. (If line 11g amount exceeds 10% of line 25, column (A) amount, list line 11g expenses on Schedule O.)	14,620	14,620		
12 Advertising and promotion	4,501	4,501		
13 Office expenses	496		127	369
14 Information technology				
15 Royalties				
16 Occupancy				
17 Travel				
18 Payments of travel or entertainment expenses for any federal, state, or local public officials				
19 Conferences, conventions, and meetings	861		861	
20 Interest				
21 Payments to affiliates				
22 Depreciation, depletion, and amortization				
23 Insurance	2,560		2,560	
24 Other expenses. Itemize expenses not covered above (List miscellaneous expenses in line 24e. If line 24e amount exceeds 10% of line 25, column (A) amount, list line 24e expenses on Schedule O.)				
a Dues, Fees, & Other	362		362	
b				
c				
d				
e All other expenses				
25 Total functional expenses. Add lines 1 through 24e	78,399	68,770	9,260	369
26 Joint costs. Complete this line only if the organization reported in column (B) joint costs from a combined educational campaign and fundraising solicitation. Check here <input type="checkbox"/> if following SOP 98-2 (ASC 958-720)				

Part X Balance Sheet

Check if Schedule O contains a response or note to any line in this Part X

		(A) Beginning of year		(B) End of year
Assets	1 Cash—non-interest bearing		1	
	2 Savings and temporary cash investments	38,845	2	29,335
	3 Pledges and grants receivable, net		3	
	4 Accounts receivable, net		4	
	5 Loans and other receivables from current and former officers, directors, trustees, key employees, and highest compensated employees. Complete Part II of Schedule L		5	
	6 Loans and other receivables from other disqualified persons (as defined under section 4958(f)(1)), persons described in section 4958(c)(3)(B), and contributing employers and sponsoring organizations of section 501(c)(9) voluntary employees' beneficiary organizations (see instructions). Complete Part II of Schedule L		6	
	7 Notes and loans receivable, net		7	
	8 Inventories for sale or use		8	
	9 Prepaid expenses and deferred charges		9	
	10a Land, buildings, and equipment: cost or other basis. Complete Part VI of Schedule D	10a		
	b Less: accumulated depreciation	10b		10c
	11 Investments—publicly traded securities	1,720,494	11	1,636,251
	12 Investments—other securities. See Part IV, line 11		12	
	13 Investments—program-related. See Part IV, line 11		13	
	14 Intangible assets		14	
	15 Other assets. See Part IV, line 11		15	
16 Total assets. Add lines 1 through 15 (must equal line 34)	1,759,339	16	1,665,586	
Liabilities	17 Accounts payable and accrued expenses	2,884	17	
	18 Grants payable		18	
	19 Deferred revenue		19	
	20 Tax-exempt bond liabilities		20	
	21 Escrow or custodial account liability. Complete Part IV of Schedule D		21	
	22 Loans and other payables to current and former officers, directors, trustees, key employees, highest compensated employees, and disqualified persons. Complete Part II of Schedule L		22	
	23 Secured mortgages and notes payable to unrelated third parties		23	
	24 Unsecured notes and loans payable to unrelated third parties		24	
	25 Other liabilities (including federal income tax, payables to related third parties, and other liabilities not included on lines 17-24). Complete Part X of Schedule D		25	
	26 Total liabilities. Add lines 17 through 25	2,884	26	0
Net Assets or Fund Balances	Organizations that follow SFAS 117 (ASC 958), check here <input checked="" type="checkbox"/> and complete lines 27 through 29, and lines 33 and 34.			
	27 Unrestricted net assets	80,752	27	92,025
	28 Temporarily restricted net assets	272,431	28	170,289
	29 Permanently restricted net assets	1,403,272	29	1,403,272
	Organizations that do not follow SFAS 117 (ASC 958), check here <input type="checkbox"/> and complete lines 30 through 34.			
	30 Capital stock or trust principal, or current funds		30	
	31 Paid-in or capital surplus, or land, building, or equipment fund		31	
	32 Retained earnings, endowment, accumulated income, or other funds		32	
33 Total net assets or fund balances	1,756,455	33	1,665,586	
34 Total liabilities and net assets/fund balances	1,759,339	34	1,665,586	



Part XI Reconciliation of Net Assets

Check if Schedule O contains a response or note to any line in this Part XI

1	Total revenue (must equal Part VIII, column (A), line 12)	1	44,549
2	Total expenses (must equal Part IX, column (A), line 25)	2	78,399
3	Revenue less expenses. Subtract line 2 from line 1	3	-33,850
4	Net assets or fund balances at beginning of year (must equal Part X, line 33, column (A))	4	1,756,455
5	Net unrealized gains (losses) on investments	5	-57,019
6	Donated services and use of facilities	6	
7	Investment expenses	7	
8	Prior period adjustments	8	
9	Other changes in net assets or fund balances (explain in Schedule O)	9	
10	Net assets or fund balances at end of year. Combine lines 3 through 9 (must equal Part X, line 33, column (B))	10	1,665,586

Part XII Financial Statements and Reporting

Check if Schedule O contains a response or note to any line in this Part XII

		Yes	No
1	Accounting method used to prepare the Form 990: <input type="checkbox"/> Cash <input checked="" type="checkbox"/> Accrual <input type="checkbox"/> Other If the organization changed its method of accounting from a prior year or checked "Other," explain in Schedule O.		
2a	Were the organization's financial statements compiled or reviewed by an independent accountant? If "Yes," check a box below to indicate whether the financial statements for the year were compiled or reviewed on a separate basis, consolidated basis, or both: <input type="checkbox"/> Separate basis <input type="checkbox"/> Consolidated basis <input type="checkbox"/> Both consolidated and separate basis		X
2b	Were the organization's financial statements audited by an independent accountant? If "Yes," check a box below to indicate whether the financial statements for the year were audited on a separate basis, consolidated basis, or both: <input checked="" type="checkbox"/> Separate basis <input type="checkbox"/> Consolidated basis <input type="checkbox"/> Both consolidated and separate basis	X	
2c	If "Yes" to line 2a or 2b, does the organization have a committee that assumes responsibility for oversight of the audit, review, or compilation of its financial statements and selection of an independent accountant? If the organization changed either its oversight process or selection process during the tax year, explain in Schedule O.	X	
3a	As a result of a federal award, was the organization required to undergo an audit or audits as set forth in the Single Audit Act and OMB Circular A-133?		X
3b	If "Yes," did the organization undergo the required audit or audits? If the organization did not undergo the required audit or audits, explain why in Schedule O and describe any steps taken to undergo such audits.		



SCHEDULE A
(Form 990 or 990-EZ)

Public Charity Status and Public Support

Complete if the organization is a section 501(c)(3) organization or a section 4947(a)(1) nonexempt charitable trust.

▶ Attach to Form 990 or Form 990-EZ.

▶ Information about Schedule A (Form 990 or 990-EZ) and its instructions is at www.irs.gov/form990.

OMB No. 1545-0047

2015

Open to Public Inspection

Department of the Treasury
Internal Revenue Service

Name of the organization

Cupertino Library Foundation

Employer identification number

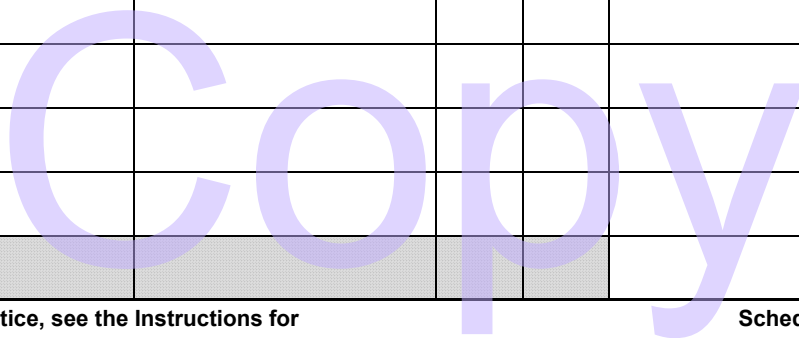
77-0372742

Part I Reason for Public Charity Status (All organizations must complete this part.) See instructions.

The organization is not a private foundation because it is: (For lines 1 through 11, check only one box.)

- 1 A church, convention of churches, or association of churches described in **section 170(b)(1)(A)(i)**.
- 2 A school described in **section 170(b)(1)(A)(ii)**. (Attach Schedule E (Form 990 or 990-EZ).)
- 3 A hospital or a cooperative hospital service organization described in **section 170(b)(1)(A)(iii)**.
- 4 A medical research organization operated in conjunction with a hospital described in **section 170(b)(1)(A)(iii)**. Enter the hospital's name, city, and state:
- 5 An organization operated for the benefit of a college or university owned or operated by a governmental unit described in **section 170(b)(1)(A)(iv)**. (Complete Part II.)
- 6 A federal, state, or local government or governmental unit described in **section 170(b)(1)(A)(v)**.
- 7 An organization that normally receives a substantial part of its support from a governmental unit or from the general public described in **section 170(b)(1)(A)(vi)**. (Complete Part II.)
- 8 A community trust described in **section 170(b)(1)(A)(vi)**. (Complete Part II.)
- 9 An organization that normally receives: (1) more than 33 1/3% of its support from contributions, membership fees, and gross receipts from activities related to its exempt functions—subject to certain exceptions, and (2) no more than 33 1/3% of its support from gross investment income and unrelated business taxable income (less section 511 tax) from businesses acquired by the organization after June 30, 1975. See **section 509(a)(2)**. (Complete Part III.)
- 10 An organization organized and operated exclusively to test for public safety. See **section 509(a)(4)**.
- 11 An organization organized and operated exclusively for the benefit of, to perform the functions of, or to carry out the purposes of one or more publicly supported organizations described in **section 509(a)(1)** or **section 509(a)(2)**. See **section 509(a)(3)**. Check the box in lines 11a through 11d that describes the type of supporting organization and complete lines 11e, 11f, and 11g.
 - a **Type I.** A supporting organization operated, supervised, or controlled by its supported organization(s), typically by giving the supported organization(s) the power to regularly appoint or elect a majority of the directors or trustees of the supporting organization. **You must complete Part IV, Sections A and B.**
 - b **Type II.** A supporting organization supervised or controlled in connection with its supported organization(s), by having control or management of the supporting organization vested in the same persons that control or manage the supported organization(s). **You must complete Part IV, Sections A and C.**
 - c **Type III functionally integrated.** A supporting organization operated in connection with, and functionally integrated with, its supported organization(s) (see instructions). **You must complete Part IV, Sections A, D, and E.**
 - d **Type III non-functionally integrated.** A supporting organization operated in connection with its supported organization(s) that is not functionally integrated. The organization generally must satisfy a distribution requirement and an attentiveness requirement (see instructions). **You must complete Part IV, Sections A and D, and Part V.**
 - e Check this box if the organization received a written determination from the IRS that it is a Type I, Type II, Type III functionally integrated, or Type III non-functionally integrated supporting organization.
 - f Enter the number of supported organizations
 - g Provide the following information about the supported organization(s).

(i) Name of supported organization	(ii) EIN	(iii) Type of organization (described on lines 1–9 above (see instructions))	(iv) Is the organization listed in your governing document?		(v) Amount of monetary support (see instructions)	(vi) Amount of other support (see instructions)
			Yes	No		
(A)						
(B)						
(C)						
(D)						
(E)						
Total						



Part II Support Schedule for Organizations Described in Sections 170(b)(1)(A)(iv) and 170(b)(1)(A)(vi)
 (Complete only if you checked the box on line 5, 7, or 8 of Part I or if the organization failed to qualify under Part III. If the organization fails to qualify under the tests listed below, please complete Part III.)

Section A. Public Support

Calendar year (or fiscal year beginning in) ▶	(a) 2011	(b) 2012	(c) 2013	(d) 2014	(e) 2015	(f) Total
1 Gifts, grants, contributions, and membership fees received. (Do not include any "unusual grants.")	6,469	21,543	10,842	44,988	27,785	111,627
2 Tax revenues levied for the organization's benefit and either paid to or expended on its behalf						
3 The value of services or facilities furnished by a governmental unit to the organization without charge						
4 Total. Add lines 1 through 3	6,469	21,543	10,842	44,988	27,785	111,627
5 The portion of total contributions by each person (other than a governmental unit or publicly supported organization) included on line 1 that exceeds 2% of the amount shown on line 11, column (f)						26,873
6 Public support. Subtract line 5 from line 4.						84,754

Section B. Total Support

Calendar year (or fiscal year beginning in) ▶	(a) 2011	(b) 2012	(c) 2013	(d) 2014	(e) 2015	(f) Total
7 Amounts from line 4	6,469	21,543	10,842	44,988	27,785	111,627
8 Gross income from interest, dividends, payments received on securities loans, rents, royalties and income from similar sources	38,126	32,181	9,507	-1,776	16,664	94,702
9 Net income from unrelated business activities, whether or not the business is regularly carried on						
10 Other income. Do not include gain or loss from the sale of capital assets (Explain in Part VI.)						
11 Total support. Add lines 7 through 10						206,329

12 Gross receipts from related activities, etc. (see instructions) 12 100

13 First five years. If the Form 990 is for the organization's first, second, third, fourth, or fifth tax year as a section 501(c)(3) organization, check this box and **stop here** ▶

Section C. Computation of Public Support Percentage

14 Public support percentage for 2015 (line 6, column (f) divided by line 11, column (f))	14	41.08 %
15 Public support percentage from 2014 Schedule A, Part II, line 14	15	46.10 %

16a 33 1/3% support test—2015. If the organization did not check the box on line 13, and line 14 is 33 1/3% or more, check this box and **stop here.** The organization qualifies as a publicly supported organization ▶

b 33 1/3% support test—2014. If the organization did not check a box on line 13 or 16a, and line 15 is 33 1/3% or more, check this box and **stop here.** The organization qualifies as a publicly supported organization ▶

17a 10%-facts-and-circumstances test—2015. If the organization did not check a box on line 13, 16a, or 16b, and line 14 is 10% or more, and if the organization meets the "facts-and-circumstances" test, check this box and **stop here.** Explain in Part VI how the organization meets the "facts-and-circumstances" test. The organization qualifies as a publicly supported organization ▶

b 10%-facts-and-circumstances test—2014. If the organization did not check a box on line 13, 16a, 16b, or 17a, and line 15 is 10% or more, and if the organization meets the "facts-and-circumstances" test, check this box and **stop here.** Explain in Part VI how the organization meets the "facts-and-circumstances" test. The organization qualifies as a publicly supported organization ▶

18 Private foundation. If the organization did not check a box on line 13, 16a, 16b, 17a, or 17b, check this box and see instructions ▶

Part III Support Schedule for Organizations Described in Section 509(a)(2)

(Complete only if you checked the box on line 9 of Part I or if the organization failed to qualify under Part II. If the organization fails to qualify under the tests listed below, please complete Part II.)

Section A. Public Support

Calendar year (or fiscal year beginning in) ►	(a) 2011	(b) 2012	(c) 2013	(d) 2014	(e) 2015	(f) Total
1 Gifts, grants, contributions, and membership fees received. (Do not include any "unusual grants.")						
2 Gross receipts from admissions, merchandise sold or services performed, or facilities furnished in any activity that is related to the organization's tax-exempt purpose						
3 Gross receipts from activities that are not an unrelated trade or business under section 513						
4 Tax revenues levied for the organization's benefit and either paid to or expended on its behalf						
5 The value of services or facilities furnished by a governmental unit to the organization without charge						
6 Total. Add lines 1 through 5						
7a Amounts included on lines 1, 2, and 3 received from disqualified persons						
b Amounts included on lines 2 and 3 received from other than disqualified persons that exceed the greater of \$5,000 or 1% of the amount on line 13 for the year						
c Add lines 7a and 7b						
8 Public support. (Subtract line 7c from line 6.)						

Section B. Total Support

Calendar year (or fiscal year beginning in) ►	(a) 2011	(b) 2012	(c) 2013	(d) 2014	(e) 2015	(f) Total
9 Amounts from line 6						
10a Gross income from interest, dividends, payments received on securities loans, rents, royalties and income from similar sources						
b Unrelated business taxable income (less section 511 taxes) from businesses acquired after June 30, 1975						
c Add lines 10a and 10b						
11 Net income from unrelated business activities not included in line 10b, whether or not the business is regularly carried on						
12 Other income. Do not include gain or loss from the sale of capital assets (Explain in Part VI.)						
13 Total support. (Add lines 9, 10c, 11, and 12.)						

14 First five years. If the Form 990 is for the organization's first, second, third, fourth, or fifth tax year as a section 501(c)(3) organization, check this box and **stop here**

Section C. Computation of Public Support Percentage

15 Public support percentage for 2015 (line 8, column (f) divided by line 13, column (f))	15	%
16 Public support percentage from 2014 Schedule A, Part III, line 15	16	%

Section D. Computation of Investment Income Percentage

17 Investment income percentage for 2015 (line 10c, column (f) divided by line 13, column (f))	17	%
18 Investment income percentage from 2014 Schedule A, Part III, line 17	18	%

19a 33 1/3% support tests—2015. If the organization did not check the box on line 14, and line 15 is more than 33 1/3%, and line 17 is not more than 33 1/3%, check this box and **stop here**. The organization qualifies as a publicly supported organization

b 33 1/3% support tests—2014. If the organization did not check a box on line 14 or line 19a, and line 16 is more than 33 1/3%, and line 18 is not more than 33 1/3%, check this box and **stop here**. The organization qualifies as a publicly supported organization

20 Private foundation. If the organization did not check a box on line 14, 19a, or 19b, check this box and see instructions

Part IV Supporting Organizations

(Complete only if you checked a box in line 11 on Part I. If you checked 11a of Part I, complete Sections A and B. If you checked 11b of Part I, complete Sections A and C. If you checked 11c of Part I, complete Sections A, D, and E. If you checked 11d of Part I, complete Sections A and D, and complete Part V.)

Section A. All Supporting Organizations

		Yes	No
1	Are all of the organization's supported organizations listed by name in the organization's governing documents? If "No," describe in Part VI how the supported organizations are designated. If designated by class or purpose, describe the designation. If historic and continuing relationship, explain.		
2	Did the organization have any supported organization that does not have an IRS determination of status under section 509(a)(1) or (2)? If "Yes," explain in Part VI how the organization determined that the supported organization was described in section 509(a)(1) or (2).		
3a	Did the organization have a supported organization described in section 501(c)(4), (5), or (6)? If "Yes," answer (b) and (c) below.		
3b	Did the organization confirm that each supported organization qualified under section 501(c)(4), (5), or (6) and satisfied the public support tests under section 509(a)(2)? If "Yes," describe in Part VI when and how the organization made the determination.		
3c	Did the organization ensure that all support to such organizations was used exclusively for section 170(c)(2)(B) purposes? If "Yes," explain in Part VI what controls the organization put in place to ensure such use.		
4a	Was any supported organization not organized in the United States ("foreign supported organization")? If "Yes," and if you checked 11a or 11b in Part I, answer (b) and (c) below.		
4b	Did the organization have ultimate control and discretion in deciding whether to make grants to the foreign supported organization? If "Yes," describe in Part VI how the organization had such control and discretion despite being controlled or supervised by or in connection with its supported organizations.		
4c	Did the organization support any foreign supported organization that does not have an IRS determination under sections 501(c)(3) and 509(a)(1) or (2)? If "Yes," explain in Part VI what controls the organization used to ensure that all support to the foreign supported organization was used exclusively for section 170(c)(2)(B) purposes.		
5a	Did the organization add, substitute, or remove any supported organizations during the tax year? If "Yes," answer (b) and (c) below (if applicable). Also, provide detail in Part VI , including (i) the names and EIN numbers of the supported organizations added, substituted, or removed; (ii) the reasons for each such action; (iii) the authority under the organization's organizing document authorizing such action; and (iv) how the action was accomplished (such as by amendment to the organizing document).		
5b	Type I or Type II only. Was any added or substituted supported organization part of a class already designated in the organization's organizing document?		
5c	Substitutions only. Was the substitution the result of an event beyond the organization's control?		
6	Did the organization provide support (whether in the form of grants or the provision of services or facilities) to anyone other than (i) its supported organizations, (ii) individuals that are part of the charitable class benefited by one or more of its supported organizations, or (iii) other supporting organizations that also support or benefit one or more of the filing organization's supported organizations? If "Yes," provide detail in Part VI .		
7	Did the organization provide a grant, loan, compensation, or other similar payment to a substantial contributor (defined in section 4958(c)(3)(C)), a family member of a substantial contributor, or a 35% controlled entity with regard to a substantial contributor? If "Yes," complete Part I of Schedule L (Form 990 or 990-EZ).		
8	Did the organization make a loan to a disqualified person (as defined in section 4958) not described in line 7? If "Yes," complete Part I of Schedule L (Form 990 or 990-EZ).		
9a	Was the organization controlled directly or indirectly at any time during the tax year by one or more disqualified persons as defined in section 4946 (other than foundation managers and organizations described in section 509(a)(1) or (2))? If "Yes," provide detail in Part VI .		
9b	Did one or more disqualified persons (as defined in line 9a) hold a controlling interest in any entity in which the supporting organization had an interest? If "Yes," provide detail in Part VI .		
9c	Did a disqualified person (as defined in line 9a) have an ownership interest in, or derive any personal benefit from, assets in which the supporting organization also had an interest? If "Yes," provide detail in Part VI .		
10a	Was the organization subject to the excess business holdings rules of section 4943 because of section 4943(f) (regarding certain Type II supporting organizations, and all Type III non-functionally integrated supporting organizations)? If "Yes," answer 10b below.		
10b	Did the organization have any excess business holdings in the tax year? (Use Schedule C, Form 4720, to determine whether the organization had excess business holdings.)		

Part IV Supporting Organizations (continued)

	Yes	No
11 Has the organization accepted a gift or contribution from any of the following persons?		
a A person who directly or indirectly controls, either alone or together with persons described in (b) and (c) below, the governing body of a supported organization?		
b A family member of a person described in (a) above?		
c A 35% controlled entity of a person described in (a) or (b) above? If "Yes" to a, b, or c, provide detail in Part VI .		

Section B. Type I Supporting Organizations

	Yes	No
1 Did the directors, trustees, or membership of one or more supported organizations have the power to regularly appoint or elect at least a majority of the organization's directors or trustees at all times during the tax year? If "No," describe in Part VI how the supported organization(s) effectively operated, supervised, or controlled the organization's activities. If the organization had more than one supported organization, describe how the powers to appoint and/or remove directors or trustees were allocated among the supported organizations and what conditions or restrictions, if any, applied to such powers during the tax year.		
2 Did the organization operate for the benefit of any supported organization other than the supported organization(s) that operated, supervised, or controlled the supporting organization? If "Yes," explain in Part VI how providing such benefit carried out the purposes of the supported organization(s) that operated, supervised, or controlled the supporting organization.		

Section C. Type II Supporting Organizations

	Yes	No
1 Were a majority of the organization's directors or trustees during the tax year also a majority of the directors or trustees of each of the organization's supported organization(s)? If "No," describe in Part VI how control or management of the supporting organization was vested in the same persons that controlled or managed the supported organization(s).		

Section D. All Type III Supporting Organizations

	Yes	No
1 Did the organization provide to each of its supported organizations, by the last day of the fifth month of the organization's tax year, (i) a written notice describing the type and amount of support provided during the prior tax year, (ii) a copy of the Form 990 that was most recently filed as of the date of notification, and (iii) copies of the organization's governing documents in effect on the date of notification, to the extent not previously provided?		
2 Were any of the organization's officers, directors, or trustees either (i) appointed or elected by the supported organization(s) or (ii) serving on the governing body of a supported organization? If "No," explain in Part VI how the organization maintained a close and continuous working relationship with the supported organization(s).		
3 By reason of the relationship described in (2), did the organization's supported organizations have a significant voice in the organization's investment policies and in directing the use of the organization's income or assets at all times during the tax year? If "Yes," describe in Part VI the role the organization's supported organizations played in this regard.		

Section E. Type III Functionally-Integrated Supporting Organizations

1 Check the box next to the method that the organization used to satisfy the Integral Part Test during the year (see instructions):		
a <input type="checkbox"/> The organization satisfied the Activities Test. Complete line 2 below.		
b <input type="checkbox"/> The organization is the parent of each of its supported organizations. Complete line 3 below.		
c <input type="checkbox"/> The organization supported a governmental entity. Describe in Part VI how you supported a government entity (see instructions).		
2 Activities Test. Answer (a) and (b) below.		
a Did substantially all of the organization's activities during the tax year directly further the exempt purposes of the supported organization(s) to which the organization was responsive? If "Yes," then in Part VI identify those supported organizations and explain how these activities directly furthered their exempt purposes, how the organization was responsive to those supported organizations, and how the organization determined that these activities constituted substantially all of its activities.		
b Did the activities described in (a) constitute activities that, but for the organization's involvement, one or more of the organization's supported organization(s) would have been engaged in? If "Yes," explain in Part VI the reasons for the organization's position that its supported organization(s) would have engaged in these activities but for the organization's involvement.		
3 Parent of Supported Organizations. Answer (a) and (b) below.		
a Did the organization have the power to regularly appoint or elect a majority of the officers, directors, or trustees of each of the supported organizations? Provide details in Part VI .		
b Did the organization exercise a substantial degree of direction over the policies, programs, and activities of each of its supported organizations? If "Yes," describe in Part VI the role played by the organization in this regard.		

Part V Type III Non-Functionally Integrated 509(a)(3) Supporting Organizations

- 1** Check here if the organization satisfied the Integral Part Test as a qualifying trust on Nov. 20, 1970. **See instructions.** All other Type III non-functionally integrated supporting organizations must complete Sections A through E.

Section A - Adjusted Net Income		(A) Prior Year	(B) Current Year (optional)
1	Net short-term capital gain	1	
2	Recoveries of prior-year distributions	2	
3	Other gross income (see instructions)	3	
4	Add lines 1 through 3	4	
5	Depreciation and depletion	5	
6	Portion of operating expenses paid or incurred for production or collection of gross income or for management, conservation, or maintenance of property held for production of income (see instructions)	6	
7	Other expenses (see instructions)	7	
8	Adjusted Net Income (subtract lines 5, 6 and 7 from line 4)	8	
Section B - Minimum Asset Amount		(A) Prior Year	(B) Current Year (optional)
1	Aggregate fair market value of all non-exempt-use assets (see instructions for short tax year or assets held for part of year):		
a	Average monthly value of securities	1a	
b	Average monthly cash balances	1b	
c	Fair market value of other non-exempt-use assets	1c	
d	Total (add lines 1a, 1b, and 1c)	1d	
e	Discount claimed for blockage or other factors (explain in detail in Part VI):		
2	Acquisition indebtedness applicable to non-exempt-use assets	2	
3	Subtract line 2 from line 1d	3	
4	Cash deemed held for exempt use. Enter 1-1/2% of line 3 (for greater amount, see instructions).	4	
5	Net value of non-exempt-use assets (subtract line 4 from line 3)	5	
6	Multiply line 5 by .035	6	
7	Recoveries of prior-year distributions	7	
8	Minimum Asset Amount (add line 7 to line 6)	8	
Section C - Distributable Amount			Current Year
1	Adjusted net income for prior year (from Section A, line 8, Column A)	1	
2	Enter 85% of line 1	2	
3	Minimum asset amount for prior year (from Section B, line 8, Column A)	3	
4	Enter greater of line 2 or line 3	4	
5	Income tax imposed in prior year	5	
6	Distributable Amount. Subtract line 5 from line 4, unless subject to emergency temporary reduction (see instructions)	6	
7	<input type="checkbox"/> Check here if the current year is the organization's first as a non-functionally-integrated Type III supporting organization (see instructions).		

Copy

Part V Type III Non-Functionally Integrated 509(a)(3) Supporting Organizations (continued)

Section D - Distributions	Current Year
1 Amounts paid to supported organizations to accomplish exempt purposes	
2 Amounts paid to perform activity that directly furthers exempt purposes of supported organizations, in excess of income from activity	
3 Administrative expenses paid to accomplish exempt purposes of supported organizations	
4 Amounts paid to acquire exempt-use assets	
5 Qualified set-aside amounts (prior IRS approval required)	
6 Other distributions (describe in Part VI). See instructions.	
7 Total annual distributions. Add lines 1 through 6.	
8 Distributions to attentive supported organizations to which the organization is responsive (provide details in Part VI). See instructions.	
9 Distributable amount for 2015 from Section C, line 6	
10 Line 8 amount divided by Line 9 amount	

Section E - Distribution Allocations (see instructions)	(i) Excess Distributions	(ii) Underdistributions Pre-2015	(iii) Distributable Amount for 2015
1 Distributable amount for 2015 from Section C, line 6			
2 Underdistributions, if any, for years prior to 2015 (reasonable cause required-see instructions)			
3 Excess distributions carryover, if any, to 2015:			
a			
b			
c			
d From 2013			
e From 2014			
f Total of lines 3a through e			
g Applied to underdistributions of prior years			
h Applied to 2015 distributable amount			
i Carryover from 2010 not applied (see instructions)			
j Remainder. Subtract lines 3g, 3h, and 3i from 3f.			
4 Distributions for 2015 from Section D, line 7: \$			
a Applied to underdistributions of prior years			
b Applied to 2015 distributable amount			
c Remainder. Subtract lines 4a and 4b from 4.			
5 Remaining underdistributions for years prior to 2015, if any. Subtract lines 3g and 4a from line 2 (if amount greater than zero, see instructions).			
6 Remaining underdistributions for 2015. Subtract lines 3h and 4b from line 1 (if amount greater than zero, see instructions).			
7 Excess distributions carryover to 2016. Add lines 3j and 4c.			
8 Breakdown of line 7:			
a			
b			
c Excess from 2013			
d Excess from 2014			
e Excess from 2015			



Part VI Supplemental Information. Provide the explanations required by Part II, line 10; Part II, line 17a or 17b; Part III, line 12; Part IV, Section A, lines 1, 2, 3b, 3c, 4b, 4c, 5a, 6, 9a, 9b, 9c, 11a, 11b, and 11c; Part IV, Section B, lines 1 and 2; Part IV, Section C, line 1; Part IV, Section D, lines 2 and 3; Part IV, Section E, lines 1c, 2a, 2b, 3a and 3b; Part V, line 1; Part V, Section B, line 1e; Part V, Section D, lines 5, 6, and 8; and Part V, Section E, lines 2, 5, and 6. Also complete this part for any additional information. (See instructions.)

Supplemental Information

For the calendar year ended December 31, 2014 the Organization did not meet the definition of being a supporting organization as required by the relationship tests under IRC 509(A). The Organization has received exempt status from the IRS as a 501(c)(3) and 170(b)(a)(A)(vi) on August 1, 1994 and is reporting its financial information as a public supported organization. This schedule reflects the prior 5 years of financial information as it relates to the public support percentage and is within the requirements as defined by 509(a)(1).

Copy

Schedule of Contributors

2015

▶ **Attach to Form 990, Form 990-EZ, or Form 990-PF.**

▶ **Information about Schedule B (Form 990, 990-EZ, or 990-PF) and its instructions is at www.irs.gov/form990.**

Name of the organization Cupertino Library Foundation	Employer identification number 77-0372742
--	--

Organization type (check one):

- | | |
|--------------------|---|
| Filers of: | Section: |
| Form 990 or 990-EZ | <input checked="" type="checkbox"/> 501(c)(3) (enter number) organization |
| | <input type="checkbox"/> 4947(a)(1) nonexempt charitable trust not treated as a private foundation |
| | <input type="checkbox"/> 527 political organization |
| Form 990-PF | <input type="checkbox"/> 501(c)(3) exempt private foundation |
| | <input type="checkbox"/> 4947(a)(1) nonexempt charitable trust treated as a private foundation |
| | <input type="checkbox"/> 501(c)(3) taxable private foundation |

Check if your organization is covered by the **General Rule** or a **Special Rule**.

Note. Only a section 501(c)(7), (8), or (10) organization can check boxes for both the General Rule and a Special Rule. See instructions.

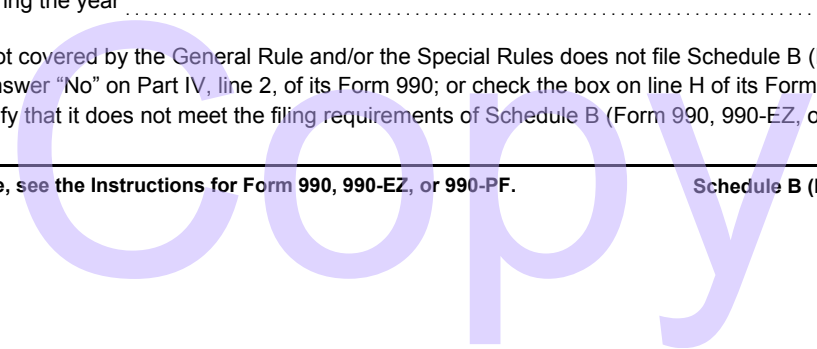
General Rule

- For an organization filing Form 990, 990-EZ, or 990-PF that received, during the year, contributions totaling \$5,000 or more (in money or property) from any one contributor. Complete Parts I and II. See instructions for determining a contributor's total contributions.

Special Rules

- For an organization described in section 501(c)(3) filing Form 990 or 990-EZ that met the 33¹/₃ % support test of the regulations under sections 509(a)(1) and 170(b)(1)(A)(vi), that checked Schedule A (Form 990 or 990-EZ), Part II, line 13, 16a, or 16b, and that received from any one contributor, during the year, total contributions of the greater of **(1)** \$5,000 or **(2)** 2% of the amount on (i) Form 990, Part VIII, line 1h, or (ii) Form 990-EZ, line 1. Complete Parts I and II.
- For an organization described in section 501(c)(7), (8), or (10) filing Form 990 or 990-EZ that received from any one contributor, during the year, total contributions of more than \$1,000 exclusively for religious, charitable, scientific, literary, or educational purposes, or for the prevention of cruelty to children or animals. Complete Parts I, II, and III.
- For an organization described in section 501(c)(7), (8), or (10) filing Form 990 or 990-EZ that received from any one contributor, during the year, contributions exclusively for religious, charitable, etc., purposes, but no such contributions totaled more than \$1,000. If this box is checked, enter here the total contributions that were received during the year for an exclusively religious, charitable, etc., purpose. Do not complete any of the parts unless the **General Rule** applies to this organization because it received nonexclusively religious, charitable, etc., contributions totaling \$5,000 or more during the year ▶ \$

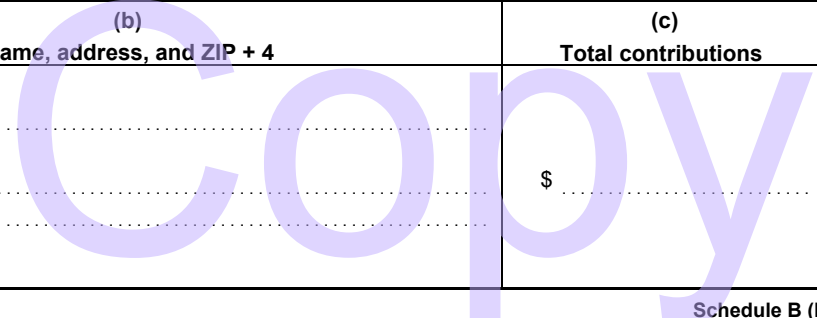
Caution. An organization that is not covered by the General Rule and/or the Special Rules does not file Schedule B (Form 990, 990-EZ, or 990-PF), but it **must** answer "No" on Part IV, line 2, of its Form 990; or check the box on line H of its Form 990-EZ or on its Form 990-PF, Part I, line 2, to certify that it does not meet the filing requirements of Schedule B (Form 990, 990-EZ, or 990-PF).



Name of organization Cupertino Library Foundation	Employer identification number 77-0372742
---	---

Part I Contributors (see instructions). Use duplicate copies of Part I if additional space is needed.

(a) No.	(b) Name, address, and ZIP + 4	(c) Total contributions	(d) Type of contribution
1	Peter Likhachev Foundation 22106 Dean Court Cupertino CA 95014	\$ 10,500	Person <input checked="" type="checkbox"/> Payroll <input type="checkbox"/> Noncash <input type="checkbox"/> (Complete Part II for noncash contributions.)
		\$	Person <input type="checkbox"/> Payroll <input type="checkbox"/> Noncash <input type="checkbox"/> (Complete Part II for noncash contributions.)
		\$	Person <input type="checkbox"/> Payroll <input type="checkbox"/> Noncash <input type="checkbox"/> (Complete Part II for noncash contributions.)
		\$	Person <input type="checkbox"/> Payroll <input type="checkbox"/> Noncash <input type="checkbox"/> (Complete Part II for noncash contributions.)
		\$	Person <input type="checkbox"/> Payroll <input type="checkbox"/> Noncash <input type="checkbox"/> (Complete Part II for noncash contributions.)
		\$	Person <input type="checkbox"/> Payroll <input type="checkbox"/> Noncash <input type="checkbox"/> (Complete Part II for noncash contributions.)



SCHEDULE D (Form 990)

Department of the Treasury Internal Revenue Service

Supplemental Financial Statements

Complete if the organization answered "Yes" on Form 990, Part IV, line 6, 7, 8, 9, 10, 11a, 11b, 11c, 11d, 11e, 11f, 12a, or 12b.

Attach to Form 990.

Information about Schedule D (Form 990) and its instructions is at www.irs.gov/form990.

OMB No. 1545-0047

2015

Open to Public Inspection

Name of the organization

Employer identification number

Cupertino Library Foundation

77-0372742

Part I Organizations Maintaining Donor Advised Funds or Other Similar Funds or Accounts.

Complete if the organization answered "Yes" on Form 990, Part IV, line 6.

Table with 2 columns: (a) Donor advised funds, (b) Funds and other accounts. Rows include: 1 Total number at end of year, 2 Aggregate value of contributions to (during year), 3 Aggregate value of grants from (during year), 4 Aggregate value at end of year, 5 Did the organization inform all donors...?, 6 Did the organization inform all grantees...?

Part II Conservation Easements.

Complete if the organization answered "Yes" on Form 990, Part IV, line 7.

Table with 2 columns: Description, Held at the End of the Tax Year. Rows include: 1 Purpose(s) of conservation easements held by the organization, 2 Complete lines 2a through 2d if the organization held a qualified conservation contribution..., 3 Number of conservation easements modified..., 4 Number of states where property subject to conservation easement is located, 5 Does the organization have a written policy..., 6 Staff and volunteer hours devoted..., 7 Amount of expenses incurred..., 8 Does each conservation easement reported on line 2(d) above satisfy the requirements..., 9 In Part XIII, describe how the organization reports conservation easements...

Part III Organizations Maintaining Collections of Art, Historical Treasures, or Other Similar Assets.

Complete if the organization answered "Yes" on Form 990, Part IV, line 8.

Table with 2 columns: Description, Amount. Rows include: 1a If the organization elected, as permitted under SFAS 116 (ASC 958), not to report..., 1b If the organization elected, as permitted under SFAS 116 (ASC 958), to report..., 2 If the organization received or held works of art, historical treasures, or other similar assets for financial gain...

Part III Organizations Maintaining Collections of Art, Historical Treasures, or Other Similar Assets (continued)

- 3** Using the organization's acquisition, accession, and other records, check any of the following that are a significant use of its collection items (check all that apply):
- a** Public exhibition
 - b** Scholarly research
 - c** Preservation for future generations
 - d** Loan or exchange programs
 - e** Other
- 4** Provide a description of the organization's collections and explain how they further the organization's exempt purpose in Part XIII.
- 5** During the year, did the organization solicit or receive donations of art, historical treasures, or other similar assets to be sold to raise funds rather than to be maintained as part of the organization's collection? Yes No

Part IV Escrow and Custodial Arrangements.

Complete if the organization answered "Yes" on Form 990, Part IV, line 9, or reported an amount on Form 990, Part X, line 21.

- 1a** Is the organization an agent, trustee, custodian or other intermediary for contributions or other assets not included on Form 990, Part X? Yes No
- b** If "Yes," explain the arrangement in Part XIII and complete the following table:
- | | Amount |
|--|-----------|
| c Beginning balance | 1c |
| d Additions during the year | 1d |
| e Distributions during the year | 1e |
| f Ending balance | 1f |
- 2a** Did the organization include an amount on Form 990, Part X, line 21, for escrow or custodial account liability? Yes No
- b** If "Yes," explain the arrangement in Part XIII. Check here if the explanation has been provided on Part XIII

Part V Endowment Funds.

Complete if the organization answered "Yes" on Form 990, Part IV, line 10.

	(a) Current year	(b) Prior year	(c) Two years back	(d) Three years back	(e) Four years back
1a Beginning of year balance	1,720,494	1,751,799	1,589,720	1,477,533	1,544,862
b Contributions					
c Net investment earnings, gains, and losses	-27,931	31,585	254,939	186,204	-41,976
d Grants or scholarships					
e Other expenditures for facilities and programs	43,888	50,000	80,000	61,000	11,563
f Administrative expenses	12,424	12,890	12,860	13,017	13,790
g End of year balance	1,636,251	1,720,494	1,751,799	1,589,720	1,477,533

- 2** Provide the estimated percentage of the current year end balance (line 1g, column (a)) held as:
- a** Board designated or quasi-endowment ▶ **4.50 %**
 - b** Permanent endowment ▶ **9.70 %**
 - c** Temporarily restricted endowment ▶ **85.80 %**
- The percentages on lines 2a, 2b, and 2c should equal 100%.
- 3a** Are there endowment funds not in the possession of the organization that are held and administered for the organization by:
- | | Yes | No |
|--|-----|----------|
| (i) unrelated organizations | | X |
| (ii) related organizations | | X |
- b** If "Yes" on line 3a(ii), are the related organizations listed as required on Schedule R?
- 4** Describe in Part XIII the intended uses of the organization's endowment funds.

Part VI Land, Buildings, and Equipment.

Complete if the organization answered "Yes" on Form 990, Part IV, line 11a. See Form 990, Part X, line 10.

Description of property	(a) Cost or other basis (investment)	(b) Cost or other basis (other)	(c) Accumulated depreciation	(d) Book value
1a Land				
b Buildings				
c Leasehold improvements				
d Equipment				
e Other				

Total. Add lines 1a through 1e. (Column (d) must equal Form 990, Part X, column (B), line 10c.) ▶

Part VII Investments—Other Securities.

Complete if the organization answered "Yes" on Form 990, Part IV, line 11b. See Form 990, Part X, line 12.

(a) Description of security or category (including name of security)	(b) Book value	(c) Method of valuation: Cost or end-of-year market value
(1) Financial derivatives		
(2) Closely-held equity interests		
(3) Other		
(A)		
(B)		
(C)		
(D)		
(E)		
(F)		
(G)		
(H)		
Total. (Column (b) must equal Form 990, Part X, col. (B) line 12.) ▶		

Part VIII Investments—Program Related.

Complete if the organization answered "Yes" on Form 990, Part IV, line 11c. See Form 990, Part X, line 13.

(a) Description of investment	(b) Book value	(c) Method of valuation: Cost or end-of-year market value
(1)		
(2)		
(3)		
(4)		
(5)		
(6)		
(7)		
(8)		
(9)		
Total. (Column (b) must equal Form 990, Part X, col. (B) line 13.) ▶		

Part IX Other Assets.

Complete if the organization answered "Yes" on Form 990, Part IV, line 11d. See Form 990, Part X, line 15.

(a) Description	(b) Book value
(1)	
(2)	
(3)	
(4)	
(5)	
(6)	
(7)	
(8)	
(9)	
Total. (Column (b) must equal Form 990, Part X, col. (B) line 15.) ▶	

Part X Other Liabilities.

Complete if the organization answered "Yes" on Form 990, Part IV, line 11e or 11f. See Form 990, Part X, line 25.

1. (a) Description of liability	(b) Book value
(1) Federal income taxes	
(2)	
(3)	
(4)	
(5)	
(6)	
(7)	
(8)	
(9)	
Total. (Column (b) must equal Form 990, Part X, col. (B) line 25.) ▶	

2. Liability for uncertain tax positions. In Part XIII, provide the text of the footnote to the organization's financial statements that reports the organization's liability for uncertain tax positions under FIN 48 (ASC 740). Check here if the text of the footnote has been provided in Part XIII

Part XI Reconciliation of Revenue per Audited Financial Statements With Revenue per Return.

Complete if the organization answered "Yes" on Form 990, Part IV, line 12a.

1	Total revenue, gains, and other support per audited financial statements	1	-12,470
2	Amounts included on line 1 but not on Form 990, Part VIII, line 12:		
a	Net unrealized gains (losses) on investments	2a	-57,019
b	Donated services and use of facilities	2b	
c	Recoveries of prior year grants	2c	
d	Other (Describe in Part XIII.)	2d	
e	Add lines 2a through 2d	2e	-57,019
3	Subtract line 2e from line 1	3	44,549
4	Amounts included on Form 990, Part VIII, line 12, but not on line 1:		
a	Investment expenses not included on Form 990, Part VIII, line 7b	4a	
b	Other (Describe in Part XIII.)	4b	
c	Add lines 4a and 4b	4c	
5	Total revenue. Add lines 3 and 4c . (This must equal Form 990, Part I, line 12.)	5	44,549

Part XII Reconciliation of Expenses per Audited Financial Statements With Expenses per Return.

Complete if the organization answered "Yes" on Form 990, Part IV, line 12a.

1	Total expenses and losses per audited financial statements	1	78,399
2	Amounts included on line 1 but not on Form 990, Part IX, line 25:		
a	Donated services and use of facilities	2a	
b	Prior year adjustments	2b	
c	Other losses	2c	
d	Other (Describe in Part XIII.)	2d	
e	Add lines 2a through 2d	2e	
3	Subtract line 2e from line 1	3	78,399
4	Amounts included on Form 990, Part IX, line 25, but not on line 1:		
a	Investment expenses not included on Form 990, Part VIII, line 7b	4a	
b	Other (Describe in Part XIII.)	4b	
c	Add lines 4a and 4b	4c	
5	Total expenses. Add lines 3 and 4c . (This must equal Form 990, Part I, line 18.)	5	78,399

Part XIII Supplemental Information.

Provide the descriptions required for Part II, lines 3, 5, and 9; Part III, lines 1a and 4; Part IV, lines 1b and 2b; Part V, line 4; Part X, line 2; Part XI, lines 2d and 4b; and Part XII, lines 2d and 4b. Also complete this part to provide any additional information.

Part V, Line 4 - Intended Uses for Endowment Funds

Endowment funds were received and are used, in accordance with the terms of the endowment trust, for the benefit of the City of Cupertino Library.

Part X - FIN 48 Footnote

The Foundation is not classified as a private foundation and is exempt from federal and state income taxes under section 501(c)3 of the Internal Revenue Code and Section 23701(g) of the California Code. The Foundation is considered a publicly supported organization. The Financial Accounting Standards Board prescribes a recognition threshold and a measurement attribute for financial statement recognition of tax positions taken or expected to be taken on a tax return. Management has evaluated its

Part XIII Supplemental Information (continued)

uncertain tax positions and related income tax contingencies and does not believe any material tax positions exist. The Foundation's federal and state informational returns for the years ending December 31, 2012 through December 31, 2014 are subject to examination by regulatory agencies; generally for three years after they have been filed.

Copy

**SCHEDULE I
(Form 990)**

**Grants and Other Assistance to Organizations,
Governments, and Individuals in the United States**

OMB No. 1545-0047

2015

**Open to Public
Inspection**

Department of the Treasury
Internal Revenue Service

Complete if the organization answered "Yes" on Form 990, Part IV, line 21 or 22.

▶ **Attach to Form 990.**

▶ **Information about Schedule I (Form 990) and its instructions is at www.irs.gov/form990.**

Name of the organization Cupertino Library Foundation	Employer identification number 77-0372742
---	---

Part I General Information on Grants and Assistance

- 1** Does the organization maintain records to substantiate the amount of the grants or assistance, the grantees' eligibility for the grants or assistance, and the selection criteria used to award the grants or assistance? Yes No
- 2** Describe in Part IV the organization's procedures for monitoring the use of grant funds in the United States.

Part II Grants and Other Assistance to Domestic Organizations and Domestic Governments. Complete if the organization answered "Yes" on Form 990, Part IV, line 21, for any recipient that received more than \$5,000. Part II can be duplicated if additional space is needed.

1	(a) Name and address of organization or government	(b) EIN	(c) IRC section if applicable	(d) Amount of cash grant	(e) Amount of non-cash assistance	(f) Method of valuation (book, FMV, appraisal, other)	(g) Description of non-cash assistance	(h) Purpose of grant or assistance
(1)	Cupertino Library 10400 Torre Avenue Cupertino CA 95014	94-2694547	GOV	49,649				Educational
(2)								
(3)								
(4)								
(5)								
(6)								
(7)								
(8)								
(9)								

- 2** Enter total number of section 501(c)(3) and government organizations listed in the line 1 table ▶
- 3** Enter total number of other organizations listed in the line 1 table ▶

For Paperwork Reduction Act Notice, see the Instructions for Form 990.

Schedule I (Form 990) (2015)



Part III Grants and Other Assistance to Domestic Individuals. Complete if the organization answered "Yes" on Form 990, Part IV, line 22.
Part III can be duplicated if additional space is needed.

(a) Type of grant or assistance	(b) Number of recipients	(c) Amount of cash grant	(d) Amount of non-cash assistance	(e) Method of valuation (book, FMV, appraisal, other)	(f) Description of non-cash assistance
1					
2					
3					
4					
5					
6					
7					

Part IV Supplemental Information. Provide the information required in Part I, line 2, Part III, column (b), and any other additional information.

Part I, Line 2 - Procedures for Monitoring the Use of Grant Funds

The Organization works closely with Library management and understands the needs of the community. Support is provided for various projects and project costs are monitored in addition to the event itself. All requests are approved via a board action and the focus is to encourage life long learning and self improvement.



SCHEDULE O
(Form 990 or 990-EZ)

Supplemental Information to Form 990 or 990-EZ

OMB No. 1545-0047

Complete to provide information for responses to specific questions on Form 990 or 990-EZ or to provide any additional information.

2015

Department of the Treasury
Internal Revenue Service

▶ Attach to Form 990 or 990-EZ.

Open to Public Inspection

▶ Information about Schedule O (Form 990 or 990-EZ) and its instructions is at www.irs.gov/form990.

Name of the organization

Cupertino Library Foundation

Employer identification number

77-0372742

Form 990, Part VI, Line 11b - Organization's Process to Review Form 990

The tax return is prepared by a Certified Public Accountant and is forwarded to the Treasurer for review and approval. Once it is approved the Certified Public Accountant will print out the final return for signature and mailing. The tax return is made available to all board members prior to its filing.

Form 990, Part VI, Line 12c - Enforcement of Conflicts Policy

All Officers / Directors are required to disclose potential conflicts prior to becoming a board member and are required to disclose any potential conflicts as they arise while serving on the board.

Form 990, Part VI, Line 19 - Governing Documents Disclosure Explanation

The Organization makes its governing documents available to the public via the internet through the guidestar website or via directly upon request.

Form 990, Part IX, Line 11g - Other Fees for Services

Description

Program Service

Mgt & General

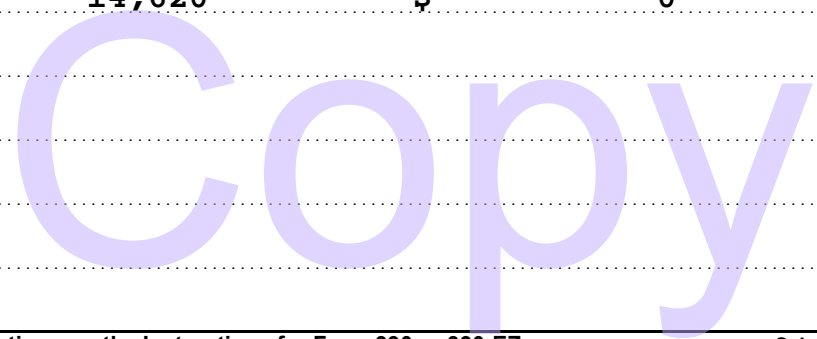
Fundraising

Website Development

\$ 14,620

\$ 0

\$ 0



034

MAIL TO:
 Registry of Charitable Trusts
 P.O. Box 903447
 Sacramento, CA 94203-4470
 Telephone: (916) 445-2021

WEB SITE ADDRESS:
<http://ag.ca.gov/charities/>

ANNUAL REGISTRATION RENEWAL FEE REPORT TO ATTORNEY GENERAL OF CALIFORNIA

Sections 12586 and 12587, California Government Code
 11 Cal. Code Regs. sections 301-307, 311 and 312

Failure to submit this report annually no later than four months and fifteen days after the end of the organization's accounting period may result in the loss of tax exemption and the assessment of a minimum tax of \$800, plus interest, and/or fines or filing penalties as defined in Government Code section 12586.1. IRS extensions will be honored.

State Charity Registration Number <u>93920</u> CUPERTINO LIBRARY FOUNDATION Name of Organization <u>10800 TORRE AVENUE</u> Address (Number and Street) CUPERTINO CA 95014 City or Town, State and ZIP Code	Check if: <input type="checkbox"/> Change of address <input type="checkbox"/> Amended report Corporate or Organization No. <u>1741930</u> Federal Employer I.D. No. <u>77-0372742</u>
--	---

ANNUAL REGISTRATION RENEWAL FEE SCHEDULE (11 Cal. Code Regs. sections 301-307, 311 and 312)
 Make Check Payable to Attorney General's Registry of Charitable Trusts

Gross Annual Revenue	Fee	Gross Annual Revenue	Fee	Gross Annual Revenue	Fee
Less than \$25,000	0	Between \$100,001 and \$250,000	\$50	Between \$1,000,001 and \$10 million	\$150
Between \$25,000 and \$100,000	\$25	Between \$250,001 and \$1 million	\$75	Between \$10,000,001 and \$50 million	\$225
				Greater than \$50 million	\$300

PART A - ACTIVITIES

For your most recent full accounting period (beginning 01/01/15 ending 12/31/15) list:
 Gross annual revenue \$ 44,549 Total assets \$ 1,665,586

PART B - STATEMENTS REGARDING ORGANIZATION DURING THE PERIOD OF THIS REPORT

Note: If you answer "yes" to any of the questions below, you must attach a separate sheet providing an explanation and details for each "yes" response. Please review RRF-1 instructions for information required.

		Yes	No
1. During this reporting period, were there any contracts, loans, leases or other financial transactions between the organization and any officer, director or trustee thereof either directly or with an entity in which any such officer, director or trustee had any financial interest?			X
2. During this reporting period, was there any theft, embezzlement, diversion or misuse of the organization's charitable prop. or funds?			X
3. During this reporting period, did non-program expenditures exceed 50% of gross revenues?			X
4. During this reporting period, were any organization funds used to pay any penalty, fine or judgment? If you filed a Form 4720 with the Internal Revenue Service, attach a copy.			X
5. During this reporting period, were the services of a commercial fundraiser or fundraising counsel for charitable purposes used? If "yes," provide an attachment listing the name, address, and telephone number of the service provider.			X
6. During this reporting period, did the organization receive any governmental funding? If so, provide an attachment listing the name of the agency, mailing address, contact person, and telephone number.			X
7. During this reporting period, did the organization hold a raffle for charitable purposes? If "yes," provide an attachment indicating the number of raffles and the date(s) they occurred.			X
8. Does the organization conduct a vehicle donation program? If "yes," provide an attachment indicating whether the program is operated by the charity or whether the organization contracts with a commercial fundraiser for charitable purposes.			X
9. Did your organization have prepared an audited financial statement in accordance with generally accepted accounting principles for this reporting period?	X		

Organization's area code and telephone number 408-255-2102

Organization's e-mail address _____

I declare under penalty of perjury that I have examined this report, including accompanying documents, and to the best of my knowledge and belief, it is true, correct and complete.

ENO SCHMIDT
PRESIDENT

Signature of authorized officer Printed Name Title Date

TAXABLE YEAR **2015** **California Exempt Organization Annual Information Return**

FORM **199**

Calendar Year 2015 or fiscal year beginning (mm/dd/yyyy) _____, and ending (mm/dd/yyyy) _____

Corporation/Organization name **CUPERTINO LIBRARY FOUNDATION** California corporation number **1741930**

Additional information. See instructions. FEIN **77-0372742**

Street address (suite or room) **10800 TORRE AVENUE** PMB no. _____

City **CUPERTINO** State **CA** Zip code **95014**

Foreign country name _____ Foreign province/state/county _____ Foreign postal code _____

A First Return Yes No
B Amended Return Yes No
C IRC Section 4947(a)(1) trust Yes No
D Final Information Return? Dissolved Surrendered (Withdrawn) Merged/Reorganized
 Enter date: (mm/dd/yyyy) _____
E Check accounting method: (1) Cash (2) Accrual (3) Other
F Federal return filed? (1) 990T (2) 990-PF (3) Sch H (990) (4) Other 990 series
G Is this a group filing? See instructions Yes No
H Is this organization in a group exemption? Yes No
 If "Yes," what is the parent's name? _____
I Did the organization have any changes to its guidelines not reported to the FTB? See instructions. Yes No
J If exempt under R&TC Section 23701d, has the organization engaged in political activities? See instructions. Yes No
K Is the organization exempt under R&TC Section 23701g? Yes No
 If "Yes," enter the gross receipts from nonmember sources. \$ _____
L If organization is exempt under R&TC Section 23701d and meets the filing fee exception, check box.
 No filing fee is required Yes No
M Is the organization a Limited Liability Company? Yes No
N Did the organization file Form 100 or Form 109 to report taxable income? Yes No
O Is the organization under audit by the IRS or has the IRS audited in a prior year? Yes No
P Is federal Form 1023/1024 pending? Yes No
 Date filed with IRS _____

Part I Complete Part I unless not required to file this form. See General Instructions B and C.

Receipts and Revenues	1 Gross sales or receipts from other sources. From Side 2, Part II, line 8	1	16,764	00
	2 Gross dues and assessments from members and affiliates	2		00
	3 Gross contributions, gifts, grants, and similar amounts received	3	27,785	00
	4 Total gross receipts for filing requirement test. Add line 1 through line 3. This line must be completed. If the result is less than \$50,000, see General Instruction	4	44,549	00
	5 Cost of goods sold	5		00
	6 Cost or other basis, and sales expenses of assets sold	6		00
	7 Total costs. Add line 5 and line 6	7		00
	8 Total gross income. Subtract line 7 from line 4	8	44,549	00
Expenses	9 Total expenses and disbursements. From Side 2, Part II, line 18	9	78,399	00
	10 Excess of receipts over expenses and disbursements. Subtract line 9 from line 8	10	-33,850	00
Filing Fee	11 Total payments	11		00
	12 Use tax. See General Instruction K	12		00
	13 Payment balance. If line 11 is more than line 12, subtract line 12 from line 11	13		00
	14 Use tax balance. If line 12 is more than line 11, subtract line 11 from line 12	14		00
	15 Filing fee \$10 or \$25. See General Instruction F	15		10
	16 Penalties and Interest. See General Instruction J	16		00
	17 Balance due. Add line 12, line 15, and line 16. Then subtract line 11 from the result	17		10

Sign Here Under penalties of perjury, I declare that I have examined this return, including accompanying schedules and statements, and to the best of my knowledge and belief, it is true, correct, and complete. Declaration of preparer (other than taxpayer) is based on all information of which preparer has any knowledge.
 Signature of officer **PRESIDENT** Title Date Telephone **408-255-2102**

Paid Preparer's Use Only Preparer's signature **04/27/2016** Date Check if self-employed PTIN **P00441755**
 Firm's name (or yours, if self-employed) and address **DEBORAH DALY CPA**
1592 RAMBLEWOOD WAY
PLEASANTON, CA 94566 FEIN Telephone **925-426-1996**

May the FTB discuss this return with the preparer shown above? See instructions Yes No

CUPERTINO LIBRARY FOUNDATION
77-0372742

Part II Organizations with gross receipts of more than \$50,000 and private foundations regardless of amount of gross receipts — complete Part II or furnish substitute information.

Receipts from Other Sources	1	Gross sales or receipts from all business activities. See instructions	●	1		00	
	2	Interest	●	2		00	
	3	Dividends	●	3	16,664	00	
	4	Gross rents	●	4		00	
	5	Gross royalties	●	5		00	
	6	Gross amount received from sale of assets (See Instructions)	●	6		00	
	7	Other income. Attach schedule SEE STATEMENT 1	●	7	100	00	
	8	Total gross sales or receipts from other sources. Add line 1 through line 7. Enter here and on Side 1, Part I, line 1		8	16,764	00	
	9	Contributions, gifts, grants, and similar amounts paid. Attach schedule SEE STATEMENT 2	●	9	49,649	00	
	10	Disbursements to or for members	●	10		00	
	11	Compensation of officers, directors, and trustees. Attach schedule SEE STATEMENT 3	●	11		00	
	12	Other salaries and wages	●	12		00	
	Expenses and Disbursements	13	Interest	●	13		00
		14	Taxes	●	14		00
		15	Rents	●	15		00
		16	Depreciation and depletion (See instructions)	●	16		00
		17	Other Expenses and Disbursements. Attach schedule. SEE STATEMENT 4	●	17	28,750	00
		18	Total expenses and disbursements. Add line 9 through line 17. Enter here and on Side 1, Part I, line 9		18	78,399	00

Schedule L Balance Sheets	Beginning of taxable year		End of taxable year	
	(a)	(b)	(c)	(d)
Assets				
1 Cash		38,845	●	29,335
2 Net accounts receivable			●	
3 Net notes receivable			●	
4 Inventories			●	
5 Federal and state government obligations			●	
6 Investments in other bonds			●	
7 Investments in stock STMT 5		1,720,494	●	1,636,251
8 Mortgage loans			●	
9 Other investments. Attach schedule			●	
10 a Depreciable assets				
b Less accumulated depreciation	()	()
11 Land			●	
12 Other assets. Attach schedule			●	
13 Total assets		1,759,339		1,665,586
Liabilities and net worth				
14 Accounts payable		2,884	●	
15 Contributions, gifts, or grants payable			●	
16 Bonds and notes payable			●	
17 Mortgages payable			●	
18 Other liabilities. Attach schedule			●	
19 Capital stock or principal fund			●	
20 Paid-in or capital surplus. Attach reconciliation			●	
21 Retained earnings or income fund		1,756,455	●	1,665,586
22 Total liabilities and net worth		1,759,339		1,665,586

Schedule M-1 Reconciliation of income per books with income per return
 Do not complete this schedule if the amount on Schedule L, line 13, column (d), is less than \$50,000.

1	Net income per books	●	-90,869	7	Income recorded on books this year not included in this return. Attach schedule SEE STMT 6	●	-57,019
2	Federal income tax	●		8	Deductions in this return not charged against book income this year. Attach schedule	●	
3	Excess of capital losses over capital gains	●		9	Total. Add line 7 and line 8		-57,019
4	Income not recorded on books this year. Attach schedule	●		10	Net income per return.		
5	Expenses recorded on books this year not deducted in this return. Attach schedule	●			Subtract line 9 from line 6		-33,850
6	Total. Add line 1 through line 5		-90,869				

Statement 1 - Form 199, Part II, Line 7 - Other Income

<u>Description</u>	<u>Amount</u>
Reimbursements	\$ 100
Total	\$ 100

Copy

California Statements

Statement 2 - Form 199, Part II, Line 9 - Contributions, Gifts, Grants, and Similar Amounts

PSA	Class	Name	Address	City	State	Zip		
Relationship	Status	Purpose	Amount	Noncash Description	FMV Explanation	Book Value Amount	Book Value Explanation	Date
1		Cupertino Library Educational	10400 Torre Avenue 49,649	Cupertino	CA	95014		

Statement 3 - Form 199, Part II, Line 11 - Officer Compensation

Name	Address	City	State	Zip	Title	Avg Hrs	Compensation Amount
Eno Schmidt	10800 Torre Avenue	Cupertino	CA	95014	President	12.00	
Annie Ho	10800 Torre Avenue	Cupertino	CA	95014	At Large	1.00	
Chi Yeh	10800 Torre Avenue	Cupertino	CA	95014	Treasurer	2.00	
Beverly Lenihan	10800 Torre Avenue	Cupertino	CA	95014	Vice President	2.00	
Kiran Kundargi	10800 Torre Avenue	Cupertino	CA	95014	At Large	1.00	
Jerry Liu	10800 Torre Avenue	Cupertino	CA	95014	At Large	4.00	
Art Cohen	10800 Torre Avenue	Cupertino	CA	95014	At Large	1.00	
Calina Thompson	10800 Torre Avenue	Cupertino	CA	95014	Secretary	2.00	
Total							0

Statement 4 - Form 199, Part II, Line 17 - Other Expenses

Description	Amount
Professional Fees	\$ 5,350
Website Development	14,620
Postage	58
Printing	311
Meetings	861
Dues, Fees, & Other	362
Marketing / Outreach	4,501
Supplies	127
Insurance	2,560
Total	<u>\$ 28,750</u>

Statement 5 - Form 199, Schedule L, Line 7 - Investments in Stock

Description	Beginning of Year	End of Year
Endowment Investments	\$ 1,720,494	\$ 1,636,251
Total	<u>\$ 1,720,494</u>	<u>\$ 1,636,251</u>

Statement 6 - Form 199, Schedule M-1, Line 7 - Income Recorded on Books

Description	Amount
Net unrealized gains	\$ -57,019
Total	<u>\$ -57,019</u>

Copy